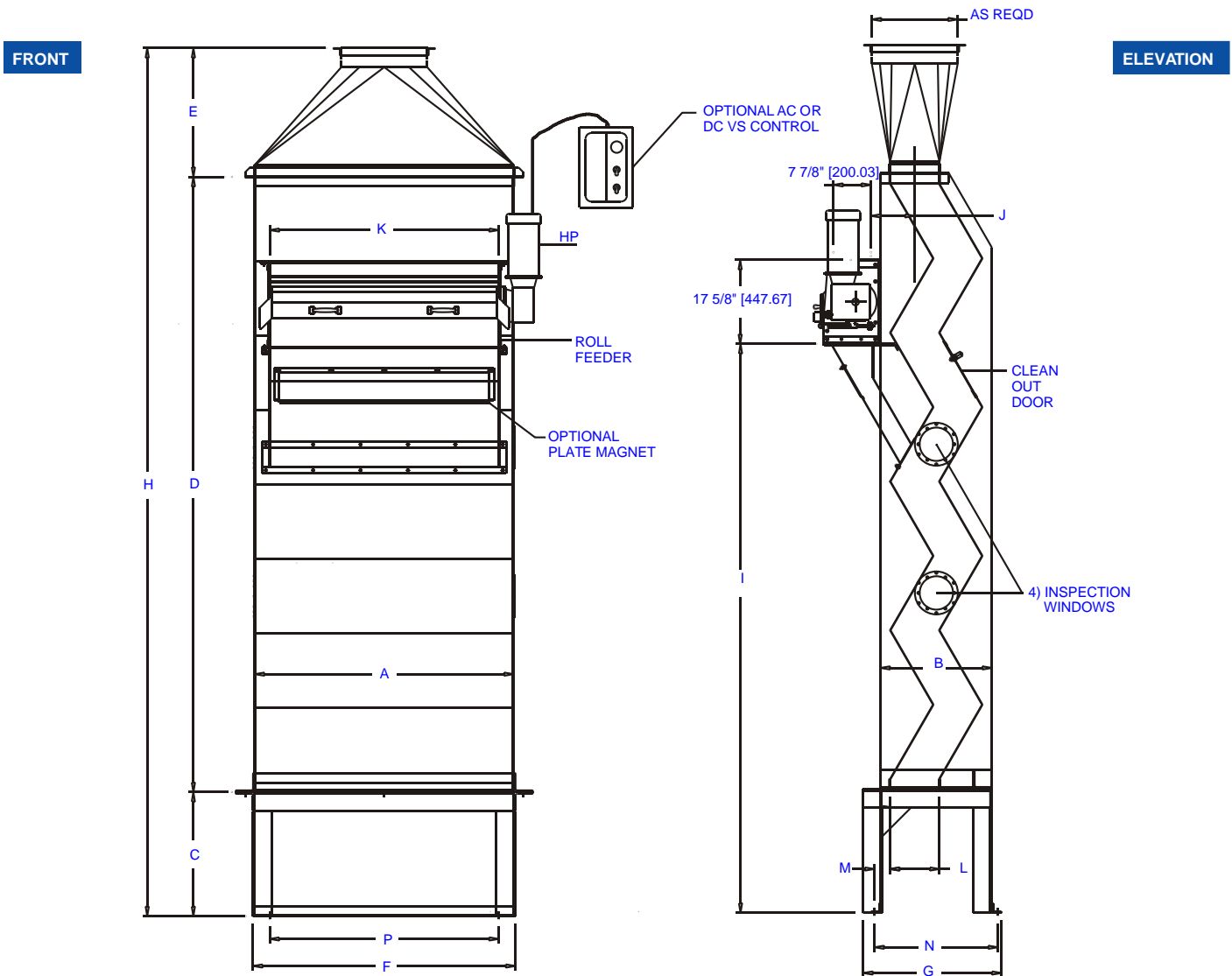


# SPECIFICATIONS: DENSITY SEPARATOR



STD SIZES	AREA	HP	A	B	C	D	E	F	G	H
8 X 30	1.67FT <sup>2</sup> [1.155M] <sup>2</sup>	.75	30" [762]	23 <sup>3</sup> / <sub>8</sub> " [593.7]	26" [660]	117 <sup>3</sup> / <sub>8</sub> " [2981.3]	27" [685.8]	31" [787.4]	29" [736.6]	170 <sup>3</sup> / <sub>8</sub> " [4327.5]
8 X 48	2.67FT <sup>2</sup> [2.48M] <sup>2</sup>	.75	48" [1220]	23 <sup>3</sup> / <sub>8</sub> " [593.7]	26" [660]	117 <sup>3</sup> / <sub>8</sub> " [2981.3]	27" [685.8]	49" [1244.6]	29" [736.6]	170 <sup>3</sup> / <sub>8</sub> " [4327.5]
9 X 54	3.38FT <sup>2</sup> [3.14M] <sup>2</sup>	1	54" [1372]	23 <sup>3</sup> / <sub>8</sub> " [593.7]	26" [660]	129" [3276.6]	27" [685.8]	55" [1397]	29" [736.6]	182" [4622.8]
10 X 60	4.17FT <sup>2</sup> [3.87M] <sup>2</sup>	1	60" [1524]	25 <sup>1</sup> / <sub>2</sub> " [647.7]	36" [914.4]	143" [3632.2]	36" [914.4]	61" [1549.4]	34" [863.6]	215" [5461]
12 X 60	5.0 FT <sup>2</sup> [4.64M] <sup>2</sup>	1	60" [1524]	29 <sup>7</sup> / <sub>8</sub> " [758.8]	36" [914.4]	170 <sup>1</sup> / <sub>4</sub> " [4324.3]	36" [914.4]	61" [1549.4]	34" [863.6]	242 <sup>1</sup> / <sub>4</sub> " [4324.3]

STD SIZES	I	J	K	L	M	N	P	SHIPPING VOLUME	SHIPPING WEIGHT
8 X 30	113 <sup>1</sup> / <sub>8</sub> " [2873.3]	9 <sup>3</sup> / <sub>16</sub> " [233.3]	24" [609.6]	9 <sup>1</sup> / <sub>4</sub> " [234.9]	3 <sup>3</sup> / <sub>16</sub> " [80.9]	25 <sup>7</sup> / <sub>8</sub> " [657.2]	24" [609.6]	88.6FT <sup>3</sup> [2.5M] <sup>3</sup>	725 LBS [329Kg]
8 X 48	113 <sup>1</sup> / <sub>8</sub> " [2873.3]	9 <sup>3</sup> / <sub>16</sub> " [233.3]	36" [914.4]	9 <sup>1</sup> / <sub>4</sub> " [234.9]	3 <sup>3</sup> / <sub>16</sub> " [80.9]	25 <sup>7</sup> / <sub>8</sub> " [657.2]	42" [1066.8]	140FT <sup>3</sup> [3.9M] <sup>3</sup>	1060 LBS [481Kg]
9 X 54	119 <sup>1</sup> / <sub>4</sub> " [3028.9]	9 <sup>3</sup> / <sub>16</sub> " [233.3]	48" [1219.2]	10 <sup>3</sup> / <sub>8</sub> " [263.5]	3 <sup>1</sup> / <sub>4</sub> " [82.5]	25 <sup>7</sup> / <sub>8</sub> " [657.2]	48" [1219.2]	168FT <sup>3</sup> [4.7M] <sup>3</sup>	1203 LBS [545Kg]
10 X 60	130" [3302]	10 <sup>5</sup> / <sub>16</sub> " [261.9]	48" [1219.2]	11 <sup>9</sup> / <sub>16</sub> " [293.6]	9 <sup>7</sup> / <sub>16</sub> " [239.7]	32 <sup>7</sup> / <sub>8</sub> " [835.0]	54" [1371.6]	258FT <sup>3</sup> [7.3M] <sup>3</sup>	1350 LBS [612Kg]
12 X 60	151" [3835.4]	11 <sup>5</sup> / <sub>8</sub> " [295.2]	48" [1219.2]	13 <sup>7</sup> / <sub>8</sub> " [352.4]	4 <sup>3</sup> / <sub>4</sub> " [120.6]	32 <sup>7</sup> / <sub>8</sub> " [835.0]	54" [1371.6]	290FT <sup>3</sup> [8.2M] <sup>3</sup>	1500 LBS [680Kg]

## Cottor Plants (India) Pvt. Ltd.

Certified ISO 9001:2000 Company

706, Acme Plaza, Opp. Sangam Talkies, Andheri-Kurla Road, ANDHERI (EAST), MUMBAI - 400059, (INDIA.)  
 Tel: +91-22-2826 4201/2/3/4, Fax: +91-22-2834 6161, E-mail: [cottor@vsnl.com](mailto:cottor@vsnl.com), Website: [www.cottor.com](http://www.cottor.com)